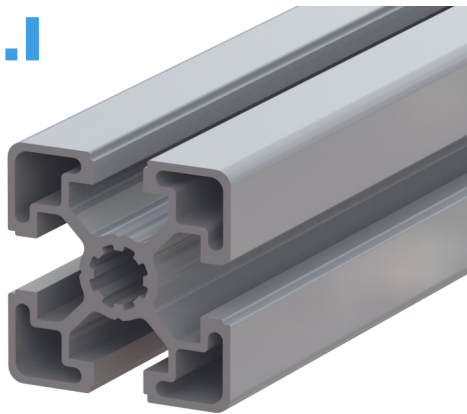


# SYSTEMOWE PROFILE ALUMINIOWE

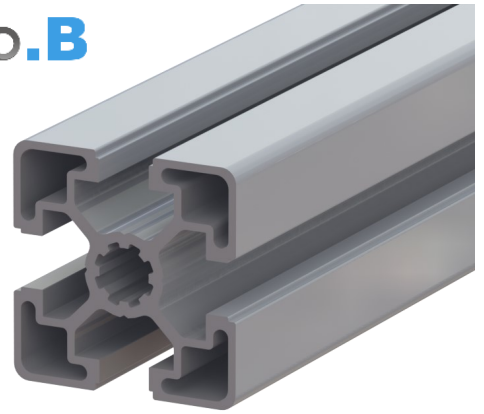
## ALUMINIUM PROFILES SYSTEM

1.0

 **neo.I**



 **neo.B**



 **neo.Lean**



## The classification of the NEOSYSTEME aluminium profiles

### SERIES neo.B

- ⇒ Grid 20 / Groove 6mm
- ⇒ Grid 30 / Groove 8mm
- ⇒ Grid 40 / Groove 10mm
- ⇒ Grid 45 / Groove 10mm
- ⇒ Grid 50 / Groove 10mm
- ⇒ Grid 60 / Groove 10mm
- ⇒ Special profiles

### SERIES neo.I

- ⇒ Grid 20 / Groove 5mm
- ⇒ Grid 30 / Groove 6mm
- ⇒ Grid 40 / Groove 8mm
- ⇒ Special profiles

### SERIES neo.Lean

All profiles are anodised, are compatible in series-specific modular dimensions and may be combined. Within the series, the uniform grid size allows any combination of the automation profiles amongst themselves. There is no branch, in which the NEOSYSTEME aluminium profiles cannot be used! The aluminium alloy (AlMgSi0,5 F 25) used is weatherproof and resistant to many chemicals.

## Anodisation of the NEOSYSTEME aluminium profiles

With anodisation, the NEOSYSTEME automation profiles become permanently scratch-resistant and protected against corrosion. All profiles are constructed in such a way that a highest possible rigidity is attained in proportion to the material used. All profiles are delivered with a guaranteed usable length of 2,000 mm, 3,000 mm or 6,000 mm as well as, by rule, with an excessive length of up to 100 mm on the basis of electrolytic surface contact points at both profile ends depending on the production.

## Recyclability of NEOSYSTEME aluminium profiles

All profiles are functionally reusable and are completely environmentally friendly and recyclable.



## Klasyfikacja profili aluminiowych NEOSYSTEME

### SERIA neo.B

- ⇒ Przekrój 20 / Rowek 6mm
- ⇒ Przekrój 30 / Rowek 8mm
- ⇒ Przekrój 40 / Rowek 10mm
- ⇒ Przekrój 45 / Rowek 10mm
- ⇒ Przekrój 50 / Rowek 10mm
- ⇒ Przekrój 60 / Rowek 10mm
- ⇒ Profile specjalne

### SERIA neo.I

- ⇒ Przekrój 20 / Rowek 5mm
- ⇒ Przekrój 30 / Rowek 6mm
- ⇒ Przekrój 40 / Rowek 8mm
- ⇒ Profile specjalne

### SERIA neo.Lean

Wszystkie profile aluminiowe są anodowane, kompatybilne w konkretnych seriach mogą być również łączone. W obrębie jednej serii, jednolity rozmiar przekroju umożliwia dowolną kombinację łączenia profili aluminiowych. Nie ma takiej branży w której profile aluminiowe NEOSYSTEME nie znalazłyby zastosowania. Zastosowany stop aluminium (AlMgSi0,5 F 25) jest odporny na działanie warunków atmosferycznych i wielu związków chemicznych.

## Anodowanie profili aluminiowych NEOSYSTEME

Dzięki anodowaniu profile aluminiowe NEOSYSTEME są odporne na zadrapania oraz chronione przed korozją. Wszystkie profile zostały skonstruowane w taki sposób, aby uzyskać jak proporcjonalnie do użytego materiału. Wszystkie profile są dostarczane z gwarantowaną długością użytkową 2000mm, 3000mm lub 6000mm. Rzeczywista długość profili jest zazwyczaj większa od bazowej o ok. 100mm. Wiąże się to z procesem anodowania, podczas którego na obu końcach profili powstają powierzchnie stykowe.

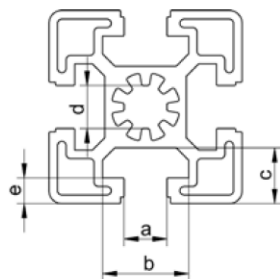
## Recykling profili aluminiowych NEOSYSTEME

Wszystkie profile aluminiowe są funkcjonalnie wielokrotnego użytku oraz są całkowicie przyjazne dla środowiska, nadając się tym samym do recyklingu.

## Dane techniczne profili aluminiowych | Technical data for the aluminium profiles

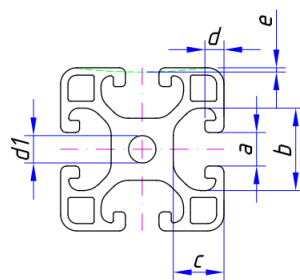
Numer materiału według norm DIN EN 573 / Material designation according to DIN EN 573	EN AW – 6063
Minimalna wytrzymałość na rozciąganie (w kierunku działania) / Minimum tensile strength $R_m$	$R_m = 245 \text{ N/mm}^2$
Granica plastyczności 0,2 % (w kierunku działania) / Proof stress in direction of pressure	$R_{p0,2} = 195 \text{ N/mm}^2$
Wydłużenie całkowite po rozerwaniu $A_5$ / Ductile yield	$A_5 = 10 \%$
Wydłużenie całkowite po rozerwaniu $A_{10}$ / Ductile yield	$A_{10} = 8 \%$
Moduł sprężystości E / Modulus of elasticity	$E = \text{ok. } 70.000 \text{ N/mm}^2$
Twardość Brinella / Brinell hardness	HB = ok. 75
Współczynnik rozszerzania wzdłużnego / Longitudinal expansion coefficient	$\alpha = 23,4 \times 10^{-6} \text{ 1/K}$
Tolerancja / Tolerances	DIN EN 12020-2
Metoda eloksyjacji / Anodizing process	E6CO
Grubość warstwy eloksyjnej / Thickness of layer	15 $\mu\text{m}$

## Tolerancje wymiarowe profili aluminiowych | Tolerances of aluminium profiles

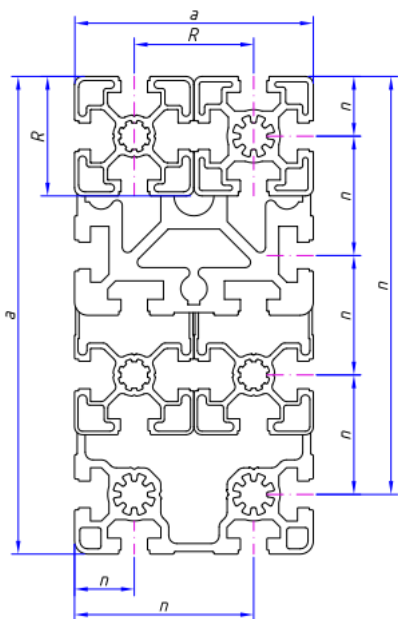


	6	8	10
a	6,0 +0,3/-0	8,0 +0,3/-0	10,0 +0,4/-0
b	12 ±0,2	16,5 ±0,2	20,1 ±0,25
c	5,5 ±0,15	9,0 ±0,15	12,5 ±0,15*
e	1,5 ±0,15	2,2 ±0,15	6,0 ±0,15
d	5,5 +0,2/-0,1	7,3 +0,2/-0,1	10,0 ±0,15

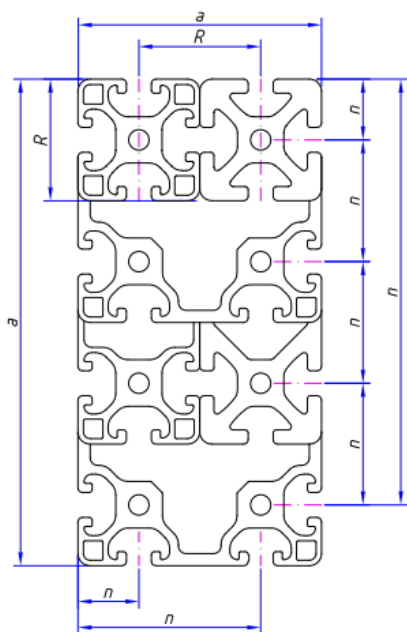
\* max. 14,5 ±0,15 dla / for B104545L



	5	6	8
a	5,0 +0,3/-0	6,2 +0,3/-0	8,0 +0,4/-0
b	11,5 +0,3/-0	16,5 +0,3/-0	20,0 +0,4/-0
c	6,35 ±0,15	9,85 +0,2/-0	12,25 +0,3/-0
d	1,8 ±0,1	3,0 +0/-0,25	4,5 +0,3/-0
e	0,15 ±0,1	0,15 ±0,1	0,2 ±0,1
d1	4,3 ±0,1	5,0 +0,2/-0	6,8 +0/-0,2



Długość krawędzi profilu Edge length of profile		Tolerancja Tolerances
a [mm]		
od / at	do / to	Pozycja rowka ± [mm] Position of nut ± [mm]
0	20	± 0,15
20	30	± 0,2
40		+ 0,6
40	60	± 0,3
80		+ 0,8
80	100	± 0,4
120		+ 1,0



Długość krawędzi profilu Edge length of profile		Tolerancja Tolerances
a [mm]		
od / at	do / to	Pozycja rowka ± [mm] Position of nut ± [mm]
0	10	± 0,1
10	20	± 0,15
20	40	± 0,2
40	60	± 0,3
60	80	± 0,4
80	100	± 0,45
100	120	± 0,50
120	160	± 0,6

## Wytrzymałość rowków profili aluminiowych | Profile groove loading capacity of the aluminium profiles

### Wytrzymałość rowków profili aluminiowych

Graniczna wartość obciążenia rowków profilu aluminiowego (początek widocznej plastycznej deformacji powierzchni zewnętrznej) dla poszczególnych łączników:

### Tensile loading

Static tensile loading capacity limit of the profile groove (beginning of visible permanent plastic deformation on the outer surface of the profile) each for connectors with the biggest thread-diameter:



Rowek Groove	Profil Profile	Śruba młoteczkowa T-head screw	Nakrętka młoteczkowa Hammer nut	Śruba centralna Central screw	Kształtka wpustowa obracana Roll-In T-slot nut	Kształtka wpustowa T-slot nut
6	B62020		1700 N	2000 N		3000 N
8	B83030	4000 N	4000 N	5000 N		6300 N
10	B104040L	7000 N	7200 N	10000 N	12000 N	12500 N
10	B104545L	7000 N	7000 N	1000 N	10000 N	12500 N
10	B104545	12000 N	12000 N	15000 N	13000 N	17000 N



Rowek Groove	Profil Profile	Śruba młoteczkowa T-head screw	Nakrętka młoteczkowa Hammer nut	Kształtka wpustowa obracana Roll-In T-slot nut	Kształtka wpustowa T-slot nut
5	I52020			1000 N	
6	I53030			3500 N	
6	I63030L			1000 N	
8	I84040	10000 N	10000 N		15000 N
8	I84040L	5000 N	5000 N		7000 N
8	I84040E	4000 N	4000 N		6000 N

Wszystkie wartości zostały określone w fizycznych testach wrywania.

Współczynniki bezpieczeństwa nie zostały zastosowane.

Podane wartości są wartości ostatecznymi i właściwe współczynniki bezpieczeństwa muszą zostać zastosowane.

All values have been determined exemplarily by physical pull-out experiments.

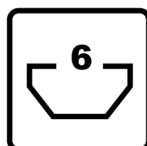
Safety factors have not been applied.

All values are ultimate values and the appropriate safety factors have to be applied.

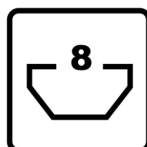
#### LEGENDA

$I_x$	Moment bezwładności	Moment of inertia
$I_y$	Moment bezwładności	Moment of inertia
$W_x$	Współczynnik wytrzymałości przekroju	Section modulus
$W_y$	Współczynnik wytrzymałości przekroju	Section modulus
G	Masa profilu kg/m	Mass (kg/m)
A	Powierzchnia profilu	Profile surface
PU	Ilość profili w paczce	Packaging Unit
L	Max. dł. profilu	Length

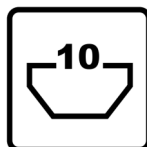
# SERIA / SERIES



20...



30...



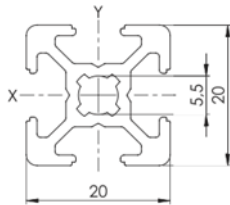
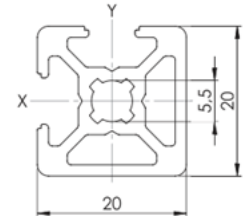
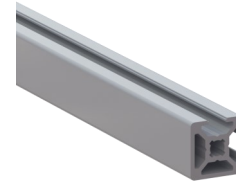
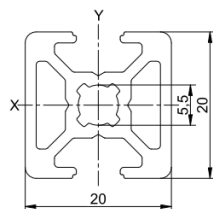
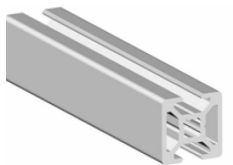
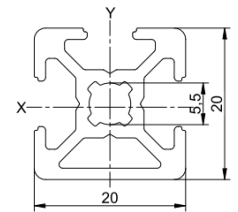
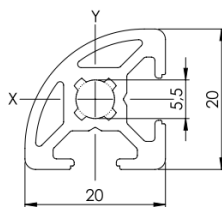
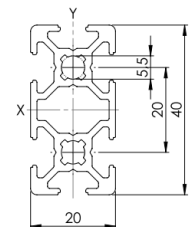
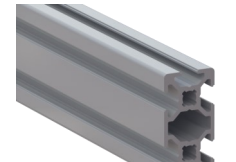
40...

45...

50...

60...

## Profile aluminiowe z rowkiem 6 mm | Aluminium profile with nut 6 mm


**B62020**

**B620202NE**

**B62020NP**

**B620203N**

**B620R90**

**B62040**


Profil aluminiowy Aluminium profile	Rowek Nut	$I_x$ [cm <sup>4</sup> ]	$I_y$ [cm <sup>4</sup> ]	$W_x$ [cm <sup>3</sup> ]	$W_y$ [cm <sup>3</sup> ]	Waga Weight [kg/m]	A [cm <sup>2</sup> ]	PE [szt] [pcs]	L [mm]	Kod # Code#
20x20	6	0,68	0,68	0,68	0,68	0,44	1,63	20	3000	<b>B62020</b>
20x20 2NVS	6	0,76	0,76	0,72	0,72	0,49	1,82	20	3000	<b>B620202NE</b>
20x20 2N	6	0,68	0,84	0,68	0,84	0,49	1,83	20	3000	<b>B620202NP</b>
20x20 3N	6	0,75	0,67	0,71	0,67	0,46	1,72	20	3000	<b>B620203N</b>
20x20 R	6	0,58	0,58	0,55	0,55	0,44	1,62	20	3000	<b>B620R90</b>
20x40	6	4,61	1,20	2,31	1,20	0,77	2,87	24	3000	<b>B62040</b>

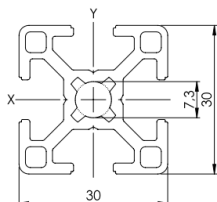
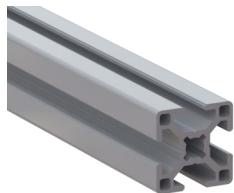
Materiał: aluminium anodowane

Material: anodized aluminium

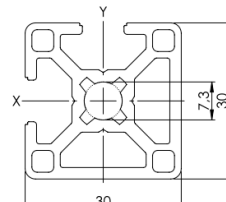
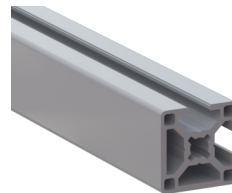
Profile aluminiowe z rowkiem 8 mm | Aluminium profile with nut 8 mm



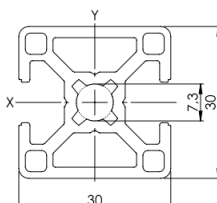
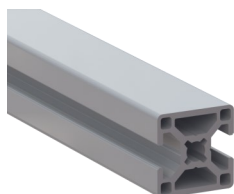
**B83030**



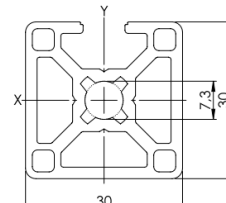
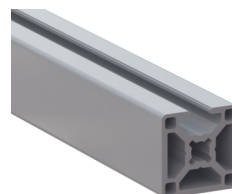
**B830302NE**



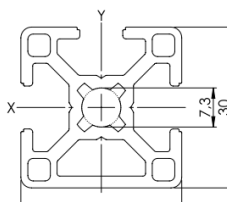
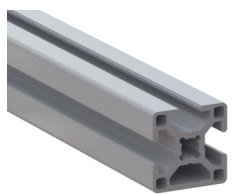
**B830302NP**



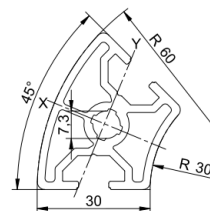
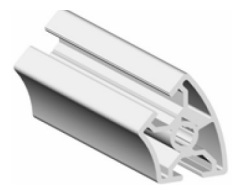
**B830301N**



**B830303N**



**B830R45**



Profil aluminiowy Aluminium profile	Rowek Nut	$I_x$ [cm <sup>4</sup> ]	$I_y$ [cm <sup>4</sup> ]	$W_x$ [cm <sup>3</sup> ]	$W_y$ [cm <sup>3</sup> ]	Waga Weight [kg/m]	A [cm <sup>2</sup> ]	PE [szt] [pcs]	L [mm]	Kod # Code#
30x30	8	2,77	2,77	1,85	1,85	0,85	3,14	20	6000	<b>B83030</b>
30x30 2NVS	8	3,11	3,11	1,98	1,98	0,95	3,50	20	6000	<b>B830302NE</b>
30x30 2N	8	3,48	2,79	2,32	1,86	0,95	3,51	20	6000	<b>B830302NP</b>
30x30 1N	8	3,12	3,49	1,99	2,32	1,00	3,69	20	6000	<b>B830301N</b>
30x30 3N	8	3,10	2,78	1,97	1,85	0,90	3,32	20	6000	<b>B830303N</b>
30x45°	8	5,29	3,70	2,37	2,13	1,11	4,12	20	6000	<b>B830R45</b>

Materiał: aluminium anodowane

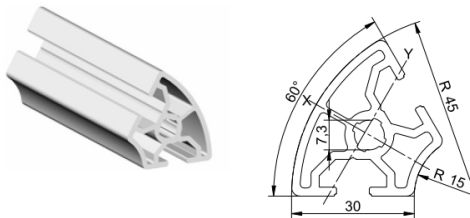
Material: anodized aluminium



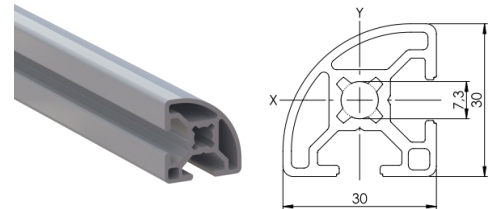
Profile aluminiowe z rowkiem 8 mm | Aluminium profile with nut 8 mm



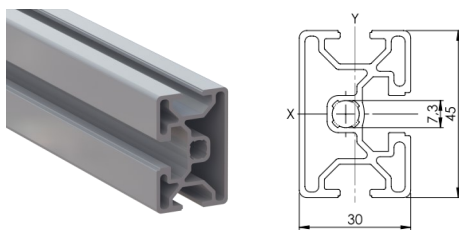
B30R60



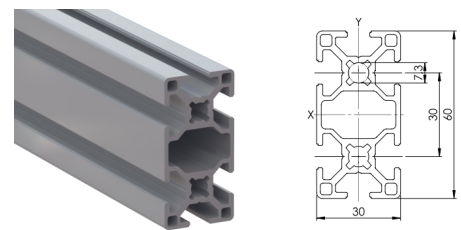
B830R90



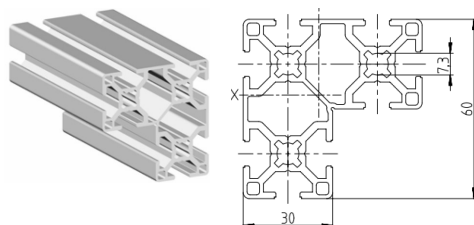
B830453N



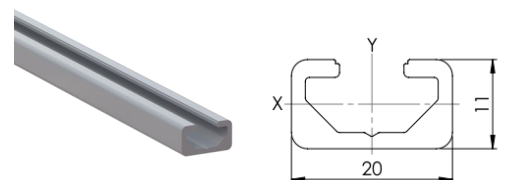
B83060



B8306060



B81120



Profil aluminiowy Aluminium profile	Rowek Nut	I <sub>x</sub> [cm <sup>4</sup> ]	I <sub>y</sub> [cm <sup>4</sup> ]	W <sub>x</sub> [cm <sup>3</sup> ]	W <sub>y</sub> [cm <sup>3</sup> ]	Waga Weight [kg/m]	A [cm <sup>2</sup> ]	PE [szt] [pcs]	L [mm]	Kod # Code#
30x60°	8	4,25	3,12	1,95	1,77	1,01	3,73	20	6000	B830R60
30x30 R	8	2,28	2,28	1,41	1,41	0,78	2,88	20	6000	B830R90
30x45	8,10	8,16	3,86	3,63	2,49	1,07	3,96	18	6000	B830453N
30x60	8	19,66	5,09	6,55	3,39	1,49	5,53	10	6000	B83060
30x60x60	8	26,12	26,12	7,51	7,51	2,22	8,2	20	6000	B8306060
11x20	8	0,13	0,52	0,20	0,52	0,28	1,02	10	2000	B81120

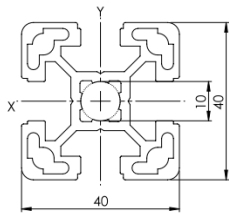
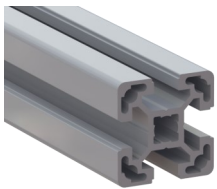
Materiał: aluminium anodowane

Material: anodized aluminium

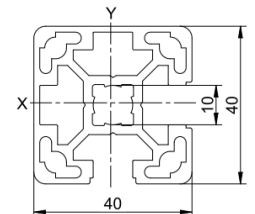
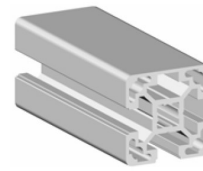
Profile aluminiowe z rowkiem 10 mm | Aluminium profile with nut 10 mm



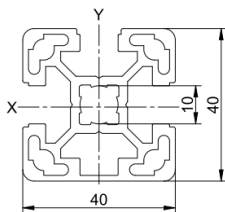
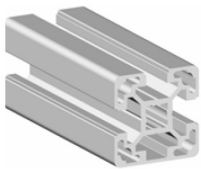
**B104040L**



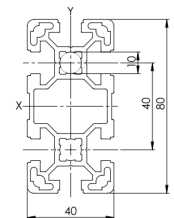
**B104040L2NE**



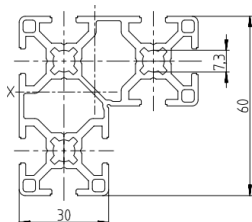
**B104040L3N**



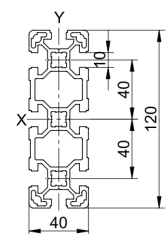
**B104080L**



**B10408080L**



**B1040120L**



Profil aluminiowy Aluminium profile	Rowek Nut	$I_x$ [cm <sup>4</sup> ]	$I_y$ [cm <sup>4</sup> ]	$W_x$ [cm <sup>3</sup> ]	$W_y$ [cm <sup>3</sup> ]	Waga Weight [kg/m]	A [cm <sup>2</sup> ]	PE [szt] [pcs]	L [mm]	Kod # Code#
40x40L	10	9,06	9,06	4,53	4,53	1,51	5,61	20	6000	<b>B104040L</b>
40x40L 2NVS	10	9,71	9,71	4,72	4,72	1,61	5,96	20	6000	<b>B104040L2NE</b>
40x40L 3N	10	9,69	9,08	4,71	4,54	1,56	5,79	20	6000	<b>B104040L3N</b>
40x80L	10	63,24	17,23	15,81	8,61	2,66	9,86	12	6000	<b>B104080L</b>
40x80x80L	10	91,51	91,51	19,89	19,89	4,16	15,41	8	6000	<b>B10408080L</b>
40x120L	10	201,95	27,76	33,66	13,88	4,14	15,35	8	6000	<b>B1040120L</b>

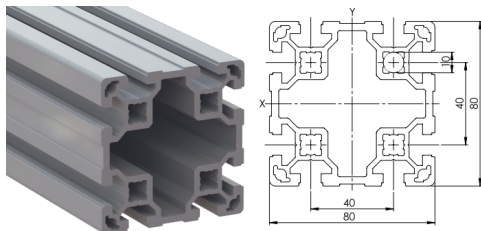
Materiał: aluminium anodowane

Material: anodized aluminium

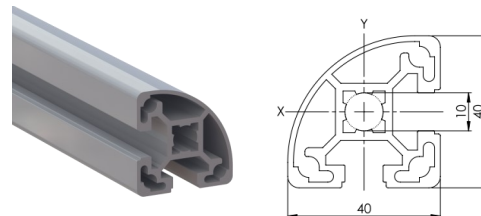
Profile aluminiowe z rowkiem 10 mm | Aluminium profile with nut 10 mm



B108080L



B1040LR90



Profil aluminiowy Aluminium profile	Rowek Nut	$I_x$ [cm <sup>4</sup> ]	$I_y$ [cm <sup>4</sup> ]	$W_x$ [cm <sup>3</sup> ]	$W_y$ [cm <sup>3</sup> ]	Waga Weight [kg/m]	A [cm <sup>2</sup> ]	PE [szt] [pcs]	L [mm]	Kod # Code#
80x80L	10	132,62	132,62	33,16	33,16	4,98	18,45	6	6000	B108080L
40x40L R	10	6,84	6,84	3,06	3,08	1,28	4,75	20	6000	B1040LR90

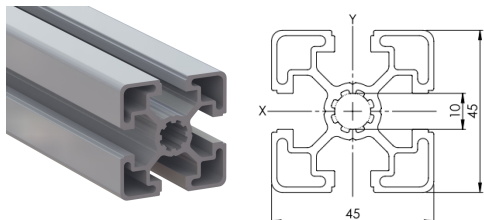
Materiał: aluminium anodowane

Material: anodized aluminium

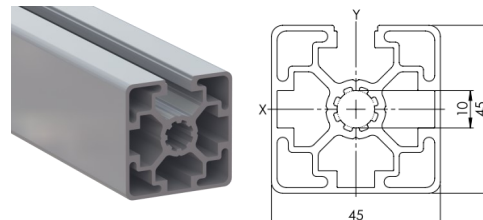
Profile aluminiowe z rowkiem 10 mm | Aluminium profile with nut 10 mm



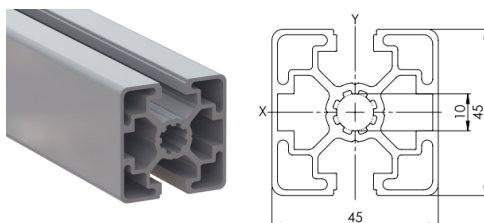
**B104545L**



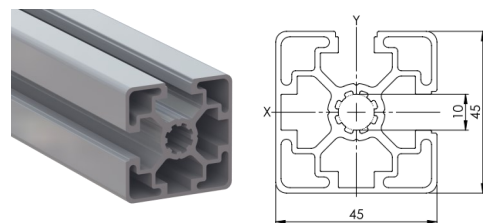
**B104545L1N**



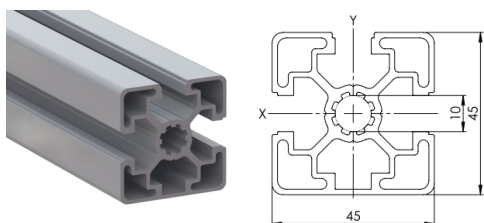
**B104545L2NP**



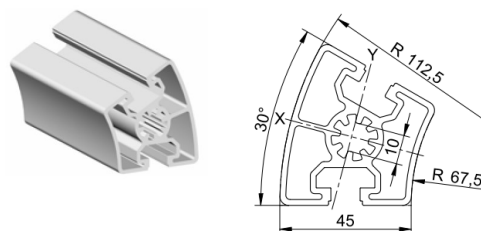
**B104545L2NE**



**B104545L3N**



**B1045R30**

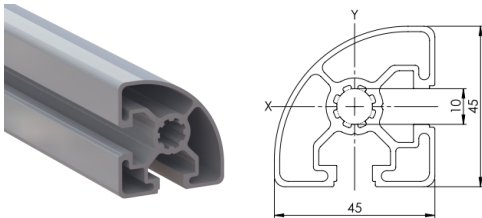
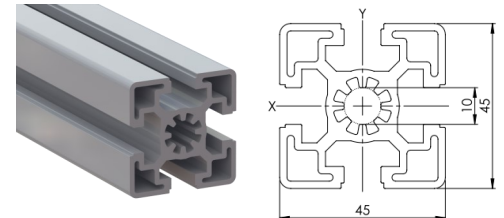
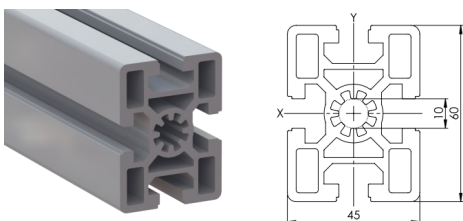
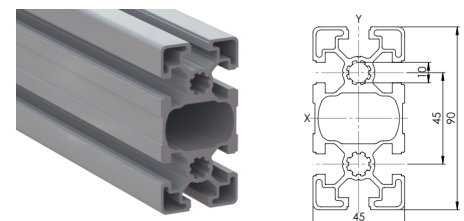
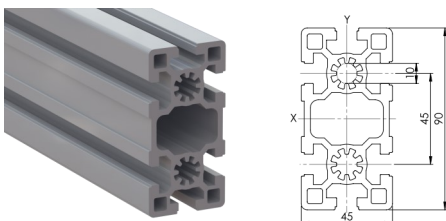
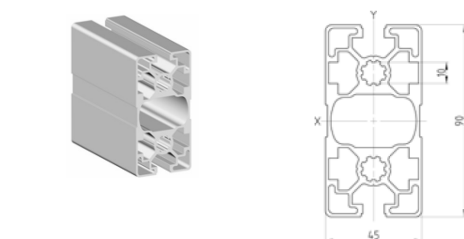


Profil aluminiowy Aluminium profile	Rowek Nut	I <sub>x</sub> [cm <sup>4</sup> ]	I <sub>y</sub> [cm <sup>4</sup> ]	W <sub>x</sub> [cm <sup>3</sup> ]	W <sub>y</sub> [cm <sup>3</sup> ]	Waga Weight [kg/m]	A [cm <sup>2</sup> ]	PE [szt] [pcs]	L [mm]	Kod # Code#
45x45L	10	11,00	11,00	4,89	4,89	1,55	5,73	20	6000	<b>B104545L</b>
45x45L 1N	10	11,85	12,68	5,13	5,64	1,69	6,25	20	6000	<b>B104545L1N</b>
45x45L 2N	10	11,04	12,66	4,91	5,63	1,64	6,08	20	6000	<b>B104545L2NP</b>
45x45L 2NVS	10	11,82	11,82	5,11	5,11	1,64	6,08	20	6000	<b>B104545L2NE</b>
45x45L 3N	10	11,65	10,87	5,03	4,83	1,57	5,83	20	6000	<b>B104545L3N</b>
45x30°	10	15,18	12,72	5,34	5,04	1,86	6,89	20	6000	<b>B1045R30</b>

Materiał: aluminium anodowane

Material: anodized aluminium

**Profile aluminiowe z rowkiem 10 mm | Aluminium profile with nut 10 mm**

**B1045LR90**

**B104545**

**B104560**

**B104590L**

**B104590**

**B104590L2NP**


Profil aluminiowy <i>Aluminium profile</i>	Rowek <i>Nut</i>	$I_x$ [cm <sup>4</sup> ]	$I_y$ [cm <sup>4</sup> ]	$W_x$ [cm <sup>3</sup> ]	$W_y$ [cm <sup>3</sup> ]	Waga <i>Weight</i> [kg/m]	A [cm <sup>2</sup> ]	PE [szt] <i>[pcs]</i>	L [mm]	Kod # <i>Code#</i>
45x45L R	10	8,01	8,01	3,20	3,20	1,27	4,70	20	6000	<b>B1045LR90</b>
45x45	10	13,94	13,94	6,19	6,19	2,03	7,50	20	6000	<b>B104545</b>
45x60	10	37,55	22,66	12,52	10,07	3,01	11,14	20	6000	<b>B104560</b>
45x90L	10	81,82	23,53	18,18	10,46	3,05	11,29	12	6000	<b>B104590L</b>
45x90	10	124,05	32,25	27,57	14,33	4,12	15,24	12	6000	<b>B104590</b>
45x90L 2N	10	85,44	26,85	18,98	11,93	3,31	11,99	12	6000	<b>B104590L2NP</b>

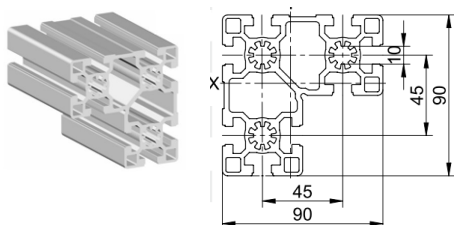
Materiał: aluminium anodowane

Material: anodized aluminium

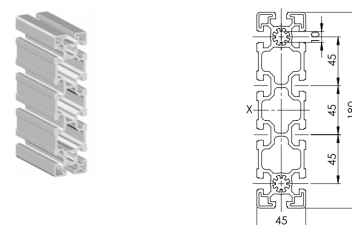
Profile aluminiowe z rowkiem 10 mm | Aluminium profile with nut 10 mm



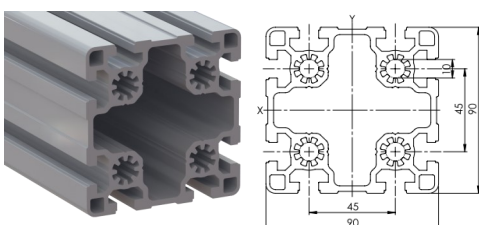
**B10459090L**



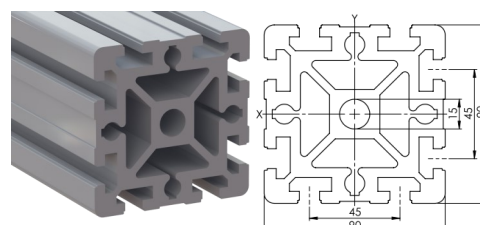
**B1045180**



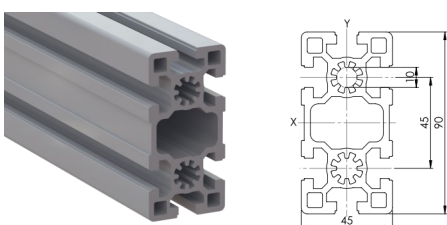
**B109090L**



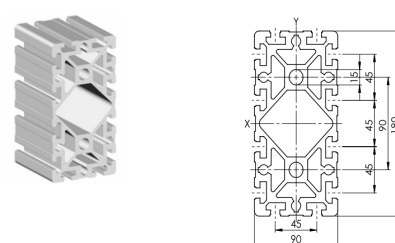
**B109090**



**B1090180L**



**B1090180**

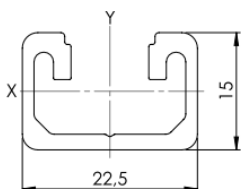
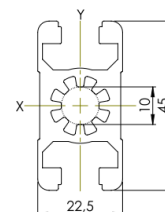
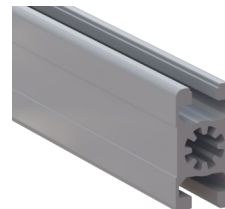


Profil aluminiowy Aluminium profile	Rowek Nut	$I_x$ [cm <sup>4</sup> ]	$I_y$ [cm <sup>4</sup> ]	$W_x$ [cm <sup>3</sup> ]	$W_y$ [cm <sup>3</sup> ]	Waga Weight [kg/m]	A [cm <sup>2</sup> ]	PE [szt] [pcs]	L [mm]	Kod # Code#
45x90x90L	10	100,56	203,33	29,34	29,34	5,67	21,01	12	6000	<b>B10459090L</b>
45x180	10	57,77	771,07	85,67	25,68	6,96	25,78	6	5600	<b>B1045180</b>
90x90L	10	210,50	210,50	46,78	46,78	6,34	23,46	6	6000	<b>B109090L</b>
90x90	10	301,85	301,85	67,07	67,07	10,51	38,93	6	6000	<b>B109090</b>
90x180L	10	1379,86	398,86	153,1	88,63	11,41	42,26	3	6000	<b>B1090180L</b>
90x180	10	2142,88	547,41	238,1	121,64	17,17	63,57	3	6000	<b>B1090180</b>

Materiał: aluminium anodowane

Material: anodized aluminium

## Profile aluminiowe z rowkiem 10 mm | Aluminium profile with nut 10 mm


**B101522,5**

**B1022,545**


Profil aluminiowy Aluminium profile	Rowek Nut	$I_x$ [cm <sup>4</sup> ]	$I_y$ [cm <sup>4</sup> ]	$W_x$ [cm <sup>3</sup> ]	$W_y$ [cm <sup>3</sup> ]	Waga Weight [kg/m]	A [cm <sup>2</sup> ]	PE [szt] [pcs]	L [mm]	Kod # Code#
	10	0,33	0,81	0,40	0,72	0,33	1,21	10	3000	<b>B101522,5</b>
	10	6,81	2,84	3,03	2,53	1,22	4,51	24	6000	<b>B1022,545</b>

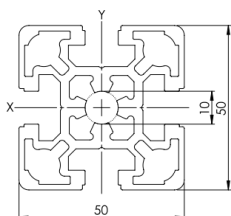
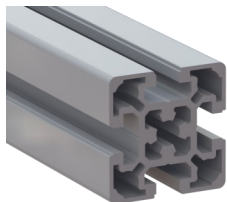
Materiał: aluminium anodowane

Material: anodized aluminium

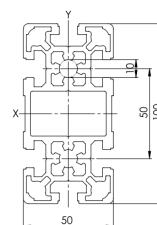
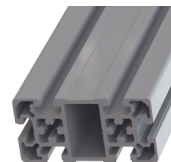
Profile aluminiowe z rowkiem 10 mm | Aluminium profile with nut 10 mm



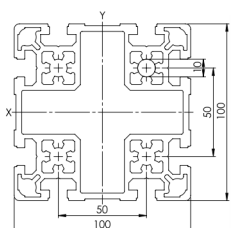
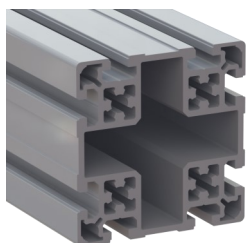
**B105050L**



**B1050100L**



**B10100100L**



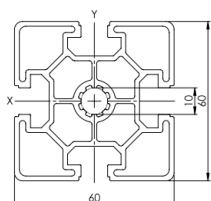
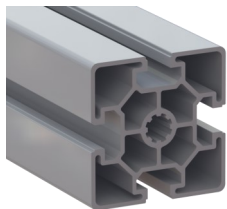
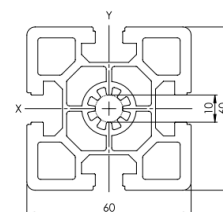
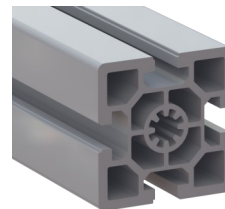
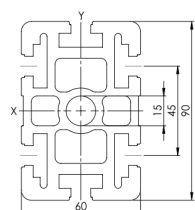
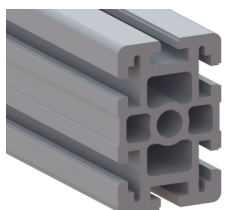
Profil aluminiowy Aluminium profile	Rowek Nut	$I_x$ [cm <sup>4</sup> ]	$I_y$ [cm <sup>4</sup> ]	$W_x$ [cm <sup>3</sup> ]	$W_y$ [cm <sup>3</sup> ]	Waga Weight [kg/m]	A [cm <sup>2</sup> ]	PE [szt] [pcs]	L [mm]	Kod # Code#
50x50L	10	21,68	21,68	8,67	8,67	2,57	9,52	20	6000	<b>B105050L</b>
50x100L	10	165,70	43,00	33,14	17,20	4,73	17,51	10	6000	<b>B1050100L</b>
100x100L	10	318,90	318,90	63,78	63,78	8,12	30,10	6	6000	<b>B10100100L</b>

Materiał: aluminium anodowane

Material: anodized aluminium



## Profile aluminiowe z rowkiem 10 mm | Aluminium profile with nut 10 mm


**B106060L**

**B106060**

**B10100100L**


Profil aluminiowy <i>Aluminium profile</i>	Rowek <i>Nut</i>	$I_x$ [cm <sup>4</sup> ]	$I_y$ [cm <sup>4</sup> ]	$W_x$ [cm <sup>3</sup> ]	$W_y$ [cm <sup>3</sup> ]	Waga <i>Weight</i> [kg/m]	A [cm <sup>2</sup> ]	PE [szt] [pcs]	L [mm]	Kod # <i>Code#</i>
60x60L	10	31,71	31,71	10,57	10,57	2,57	9,52	20	6000	<a href="#">B106060L</a>
60x60	10	52,69	52,69	17,56	17,56	3,86	14,31	20	6000	<a href="#">B106060</a>
60x90	10	212,45	90,43	47,21	30,14	6,92	25,64	10	6000	<a href="#">B106090</a>

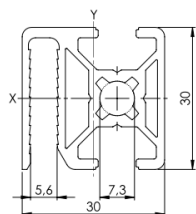
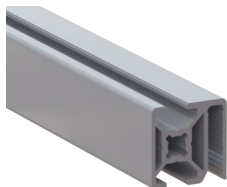
Materiał: aluminium anodowane

Material: anodized aluminium

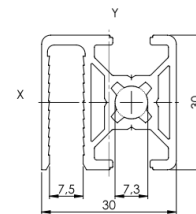
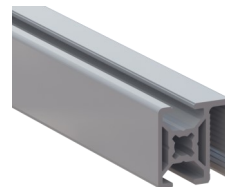
Profile specjalne | Special profiles



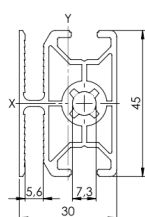
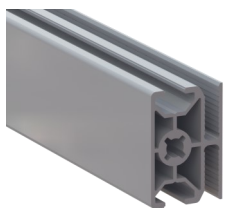
**B83030SG30**



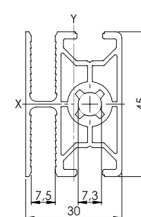
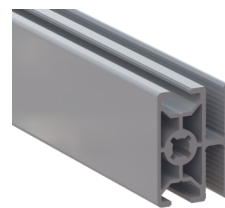
**B83030SG40**



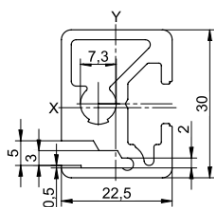
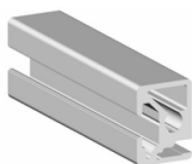
**B83045SG30**



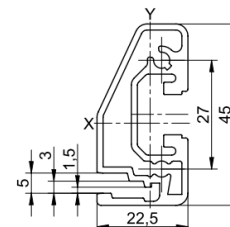
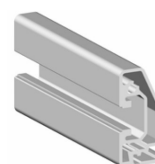
**B83045SG40**



**B8R22,530**



**B10R22,545**



Profil aluminiowy Aluminium profile	Rowek Nut	$I_x$ [cm <sup>4</sup> ]	$I_y$ [cm <sup>4</sup> ]	$W_x$ [cm <sup>3</sup> ]	$W_y$ [cm <sup>3</sup> ]	Waga Weight [kg/m]	A [cm <sup>2</sup> ]	PE [szt] [pcs]	L [mm]	Kod # Code#
Siatki 30x30 WG30	8	2,60	3,04	1,65	1,96	0,87	3,21	20	6000	<b>B83030SG30</b>
Siatki 30x30 WG40	8	2,48	2,91	1,58	1,83	0,85	3,13	20	6000	<b>B83030SG40</b>
Siatki 30x45 WG30	8	7,21	4,29	3,21	2,74	1,21	4,51	20	6000	<b>B83045SG30</b>
Siatki 30x45 WG40	8	6,95	4,11	3,09	2,57	1,20	4,44	20	6000	<b>B83045SG40</b>
Ramowy 22,5x30	8	2,92	1,59	1,85	1,38	0,85	3,15	20	6000	<b>B8R22,530</b>
Ramowy 22,5x45	10	6,28	1,53	2,55	1,17	0,87	3,21	20	6000	<b>B10R22,545</b>

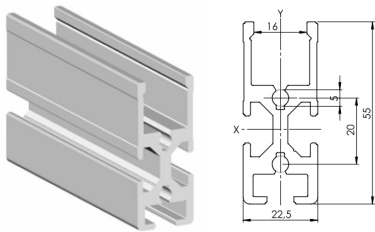
Materiał: aluminium anodowane

Material: anodized aluminium

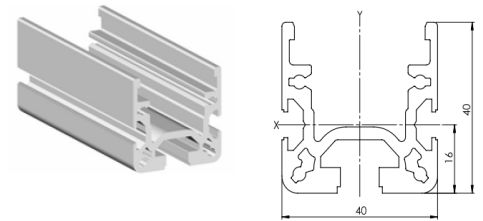
Profile specjalne | Special profiles



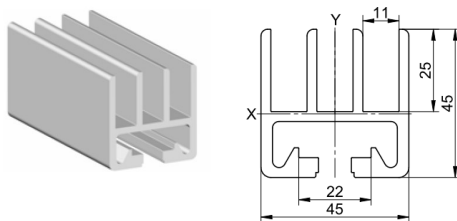
B85522,5



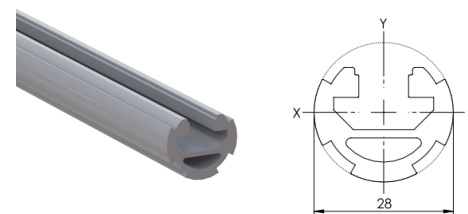
B10RP01



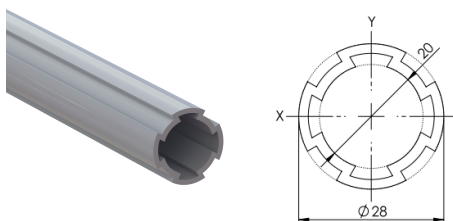
B104545ST



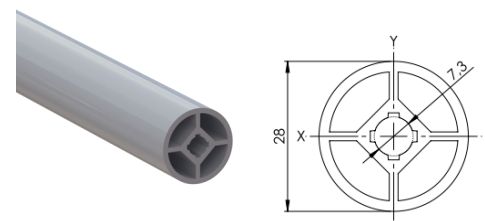
B10D28L



BD28L



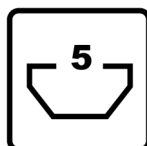
BD28



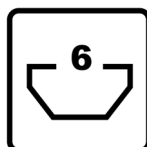
Profil aluminiowy Aluminium profile	Rowek Nut	$I_x$ [cm <sup>4</sup> ]	$I_y$ [cm <sup>4</sup> ]	$W_x$ [cm <sup>3</sup> ]	$W_y$ [cm <sup>3</sup> ]	Waga Weight [kg/m]	A [cm <sup>2</sup> ]	PE [szt] [pcs]	L [mm]	Kod # Code#
SP1 22,5x55	8	10,53	2,85	3,40	2,53	1,31	4,84	20	6000	B85522,5
U 40x40	10	10,29	5,88	5,15	2,31	1,36	5,03	20	6000	B10RP01
Drzwi przesuwanych 45x45	10	12,28	16,83	4,78	7,48	1,90	7,03	20	6000	B104545ST
Rurkowy D28L [10]	10	1,02	1,97	0,88	1,41	0,71	2,63	20	6000	B10D28L
Rurkowy D28L	-	1,33	1,33	0,50	0,50	0,48	1,79	20	6000	BD28L
Rurkowy D28	-	1,61	1,61	0,58	0,58	0,71	2,63	20	6000	BD28

Materiał: aluminium anodowane  
Material: anodized aluminium

# SERIA / SERIES



20...

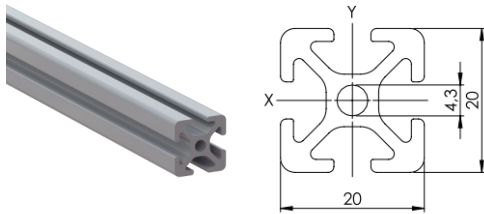
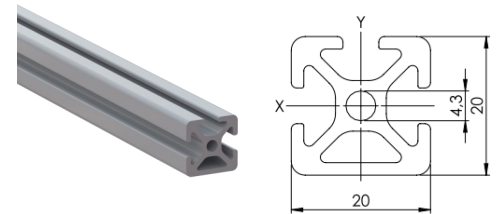
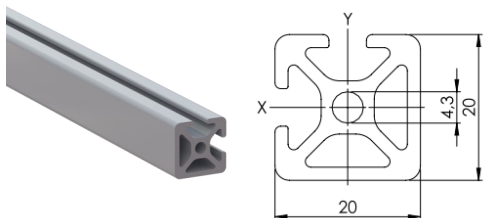
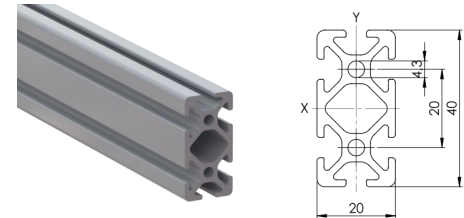
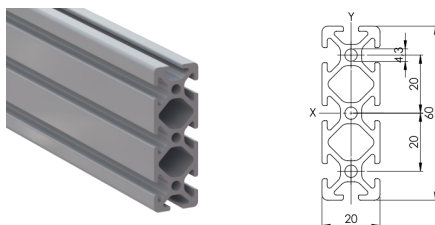
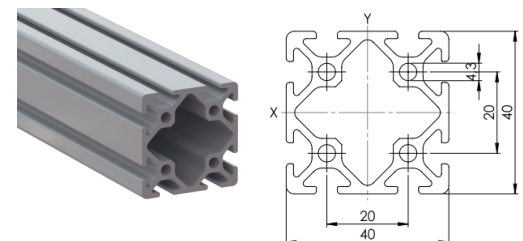


30...



40...

## Profile aluminiowe z rowkiem 5 mm | Aluminium profile with nut 5 mm


**I52020**

**I520203N**

**I520202NE**

**I52040**

**I52060**

**I54040**


Profil aluminiowy Aluminium profile	Rowek Nut	$I_x$ [cm <sup>4</sup> ]	$I_y$ [cm <sup>4</sup> ]	$W_x$ [cm <sup>3</sup> ]	$W_y$ [cm <sup>3</sup> ]	Waga Weight [kg/m]	A [cm <sup>2</sup> ]	PE [szt] [pcs]	L [mm]	Kod # Code#
20x20	5	0,74	0,74	0,74	0,74	0,49	1,82	16	3000	<b>I52020</b>
20x20 1N	5	0,82	0,75	0,78	0,75	0,52	1,92	16	3000	<b>I520203N</b>
20x20 2N90	5	0,82	0,82	0,79	0,79	0,53	2,01	16	3000	<b>I520202NE</b>
40x20	5	5,12	1,40	2,56	1,40	0,89	3,29	16	3000	<b>I52040</b>
60X20	5	16,07	2,07	5,36	2,07	1,28	4,76	5	3000	<b>I52060</b>
40x40	5	9,24	9,24	4,62	4,62	1,38	5,10	8	6000	<b>I54040</b>

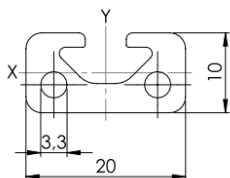
Materiał: aluminium anodowane

Material: anodized aluminium

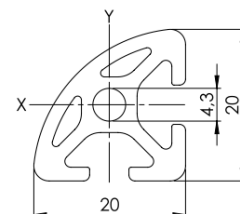
Profile aluminiowe z rowkiem 5 mm | *Aluminium profile with nut 5 mm*



**I51020**



**I520R90**

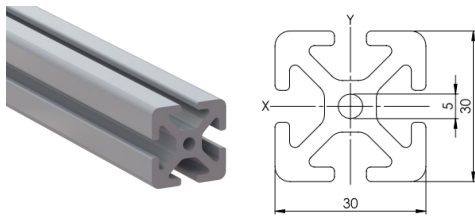
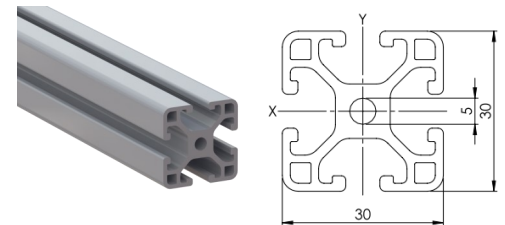
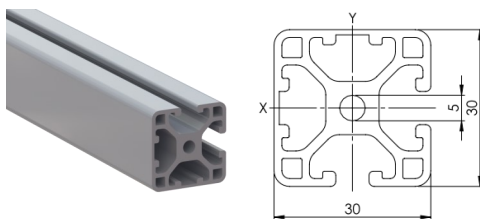
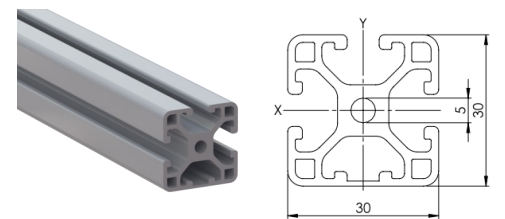
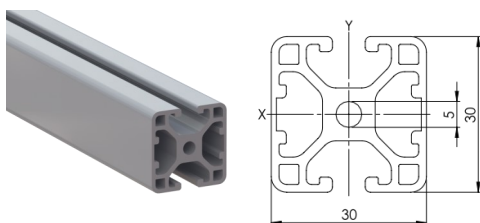
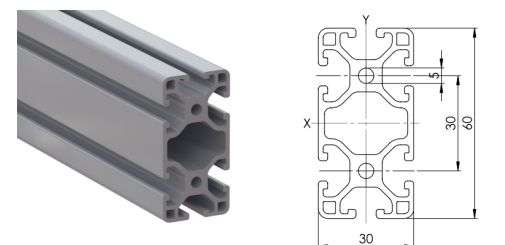


Profil aluminiowy <i>Aluminium profile</i>	Rowek <i>Nut</i>	$I_x$ [cm <sup>4</sup> ]	$I_y$ [cm <sup>4</sup> ]	$W_x$ [cm <sup>3</sup> ]	$W_y$ [cm <sup>3</sup> ]	Waga <i>Weight</i> [kg/m]	A [cm <sup>2</sup> ]	PE [szt] [pcs]	L [mm]	Kod # <i>Code#</i>
20x10	5	0,12	0,53	0,22	0,53	0,35	1,29	16	3000	<b>I51020</b>
R20-90°	5	0,58	0,58	0,54	0,54	0,47	1,72	8	3000	<b>I520R90</b>

Materiał: aluminium anodowane

*Material: anodized aluminium*

## Profile aluminiowe z rowkiem 6 mm | Aluminium profile with nut 6 mm


**I63030**

**I63030L**

**I63030L2NE**

**I63030L3N**

**I63030L2NP**

**I63060L**


Profil aluminiowy Aluminium profile	Rowek Nut	$I_x$ [cm <sup>4</sup> ]	$I_y$ [cm <sup>4</sup> ]	$W_x$ [cm <sup>3</sup> ]	$W_y$ [cm <sup>3</sup> ]	Waga Weight [kg/m]	A [cm <sup>2</sup> ]	PE [szt] [pcs]	L [mm]	Kod # Code#
30x30	6	4,13	4,13	2,75	2,75	1,24	4,60	16	6000	<b>I63030</b>
30x30L	6	2,88	2,88	1,92	1,92	0,90	3,34	16	6000	<b>I63030L</b>
30x30L 2N90	6	3,02	3,02	1,98	1,98	0,94	3,48	8	6000	<b>I63030L2NE</b>
30x30L 1N	6	3,02	2,88	1,98	1,92	0,92	3,41	8	6000	<b>I63030L3N</b>
30x30L 2N180	6	2,89	3,17	1,92	2,11	0,94	3,48	8	6000	<b>I63030L2NP</b>
60x30L	6	20,80	5,47	6,93	3,65	1,61	5,94	8	6000	<b>I63060L</b>

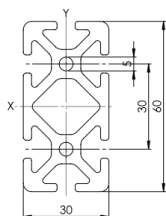
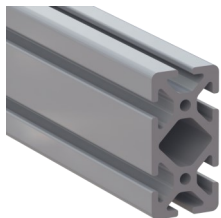
Materiał: aluminium anodowane

Material: anodized aluminium

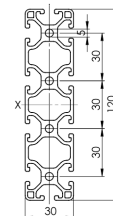
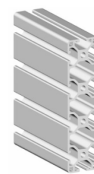
Profile aluminiowe z rowkiem 6 mm | Aluminium profile with nut 6 mm



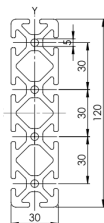
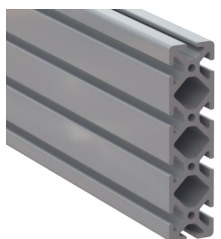
**I63060**



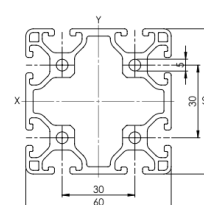
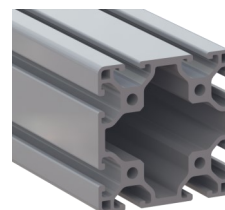
**I630120L**



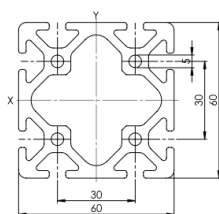
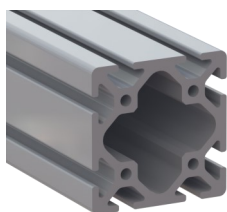
**I630120**



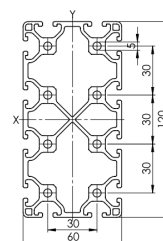
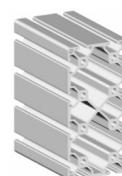
**I66060L**



**I66060**



**I660120L**



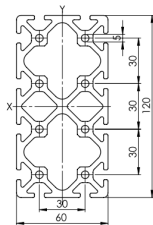
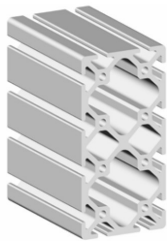
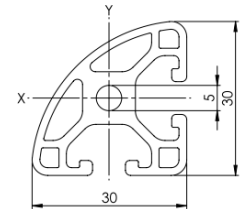
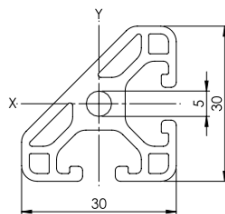
Profil aluminiowy Aluminium profile	Rowek Nut	$I_x$ [cm <sup>4</sup> ]	$I_y$ [cm <sup>4</sup> ]	$W_x$ [cm <sup>3</sup> ]	$W_y$ [cm <sup>3</sup> ]	Waga Weight [kg/m]	A [cm <sup>2</sup> ]	PE [szt] [pcs]	L [mm]	Kod # Code#
60x30	6	28,90	7,85	9,63	5,24	2,24	8,31	8	6000	<b>I63060</b>
120x30L	6	149,84	10,80	24,97	7,20	3,06	11,34	4	6000	<b>I630120L</b>
120x30	6	207,28	15,31	34,55	10,20	4,25	15,73	4	6000	<b>I630120</b>
60x60L	6	38,69	38,69	12,90	12,90	2,62	9,71	4	6000	<b>I66060L</b>
60x60	6	53,13	53,13	17,71	17,71	3,54	13,1	4	6000	<b>I66060</b>
120x60L	6	74,95	252,25	24,98	42,04	4,87	18,07	2	6000	<b>I660120L</b>

Materiał: aluminium anodowane

Material: anodized aluminium



## Profile aluminiowe z rowkiem 6 mm | Aluminium profile with nut 6 mm


**I660120**

**I630LR90**

**I63030L45°**


Profil aluminiowy Aluminium profile	Rowek Nut	$I_x$ [cm <sup>4</sup> ]	$I_y$ [cm <sup>4</sup> ]	$W_x$ [cm <sup>3</sup> ]	$W_y$ [cm <sup>3</sup> ]	Waga Weight [kg/m]	A [cm <sup>2</sup> ]	PE [szt] [pcs]	L [mm]	Kod # Code#
120X60	6	101,81	341,99	33,93	56,99	6,60	24,47	2	6000	<b>I660120</b>
R30-90°	6	2,14	2,14	1,30	1,30	0,81	2,99	8	3000	<b>I630LR90</b>
30x30L-45°	6	2,20	2,20	1,32	1,32	0,82	3,05	8	3000	<b>I63030L45°</b>

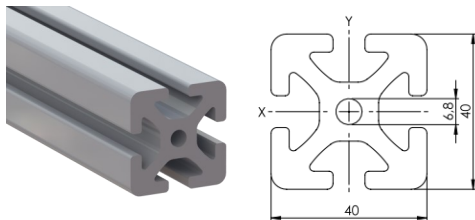
Materiał: aluminium anodowane

Material: anodized aluminium

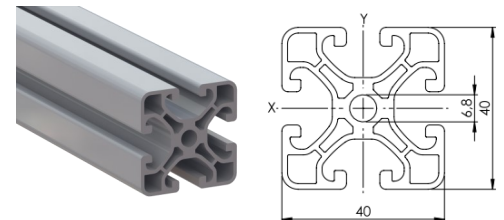
Profile aluminiowe z rowkiem 8 mm | Aluminium profile with nut 8 mm



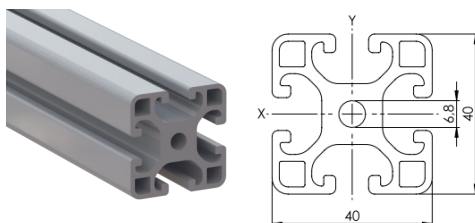
**I84040**



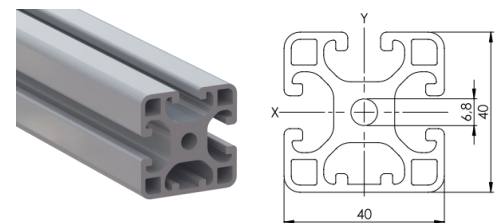
**I84040E**



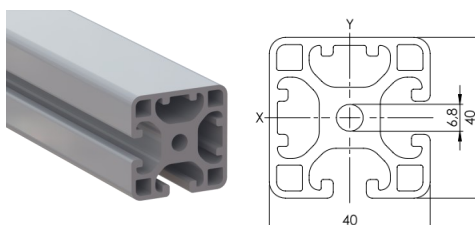
**I84040L**



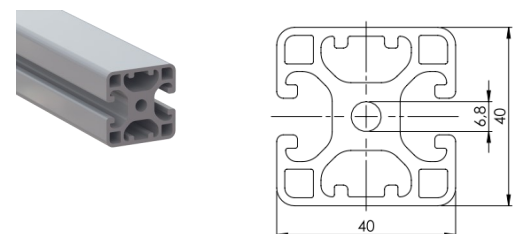
**I84040L3N**



**I84040L2NE**



**I84040L2NP**

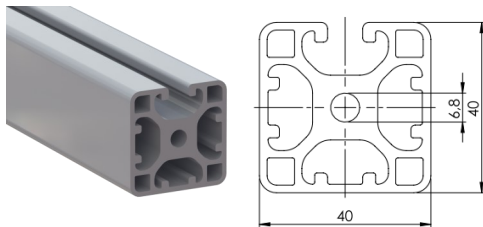
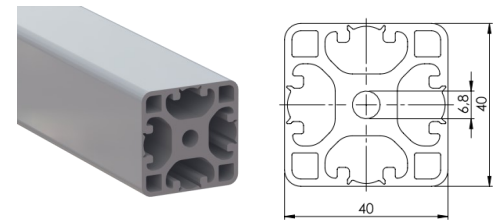
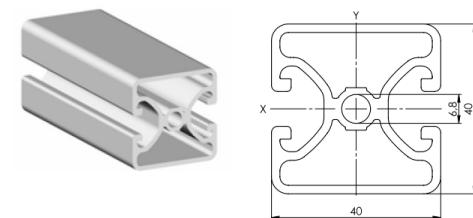
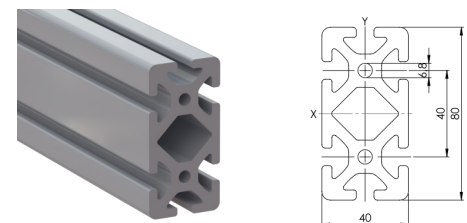
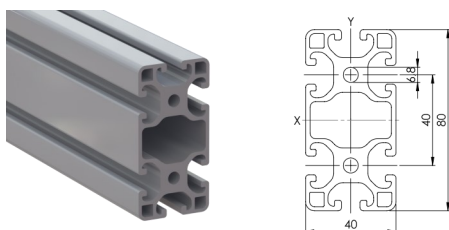
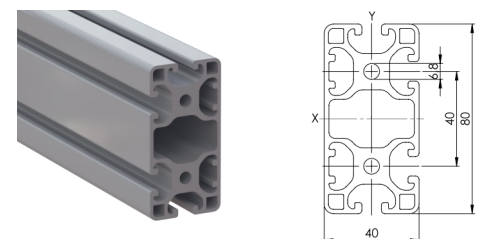


Profil aluminiowy Aluminium profile	Rowek Nut	$I_x$ [cm <sup>4</sup> ]	$I_y$ [cm <sup>4</sup> ]	$W_x$ [cm <sup>3</sup> ]	$W_y$ [cm <sup>3</sup> ]	Waga Weight [kg/m]	A [cm <sup>2</sup> ]	PE [szt] [pcs]	L [mm]	Kod # Code#
40x40	8	14,14	14,14	7,07	7,07	2,47	9,14	16	6000	<b>I84040</b>
40x40E	8	8,12	8,12	4,06	4,06	1,48	5,47	16	6000	<b>I84040E</b>
40x40L	8	9,18	9,18	4,59	4,59	1,75	6,48	16	6000	<b>I84040L</b>
40x40L 1N	8	9,80	9,19	4,78	4,60	1,80	6,65	16	6000	<b>I84040L3N</b>
40x40L 2N90	8	9,81	9,81	4,79	4,79	1,84	6,83	16	6000	<b>I84040L2NE</b>
40x40L 2N180	8	9,20	10,45	4,60	5,22	1,84	6,83	16	6000	<b>I84040L2NP</b>

Materiał: aluminium anodowane

Material: anodized aluminium

## Profile aluminiowe z rowkiem 8 mm | Aluminium profile with nut 8 mm

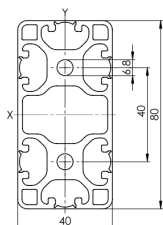
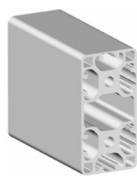
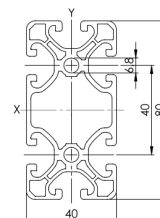
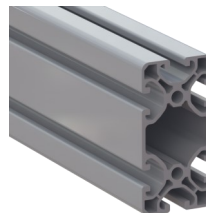
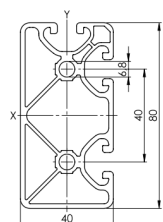
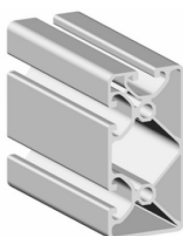
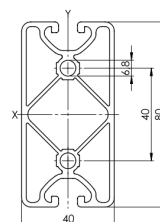
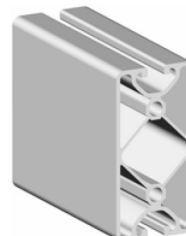
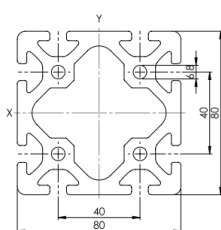
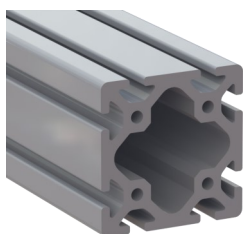
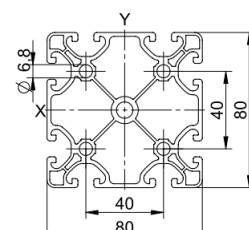
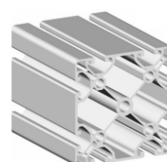

**I84040L1N**

**I84040LON**

**I84040E2NP**

**I84080**

**I84080L**

**I84080L4N**


Profil aluminiowy Aluminium profile	Rowek Nut	$I_x$ [cm <sup>4</sup> ]	$I_y$ [cm <sup>4</sup> ]	$W_x$ [cm <sup>3</sup> ]	$W_y$ [cm <sup>3</sup> ]	Waga Weight [kg/m]	A [cm <sup>2</sup> ]	PE [szt] [pcs]	L [mm]	Kod # Code#
40x40 3N	8	9,82	10,46	4,80	5,23	1,89	7,0	8	6000	<b>I84040L1N</b>
40x40 4N	8	9,80	9,80	4,90	4,90	1,84	6,8	16	6000	<b>I84040LON</b>
40x40E 2N180	8	8,15	8,77	4,07	4,38	1,344	5,0	16	6000	<b>I84040E2NP</b>
80x40	8	101,41	27,21	25,35	13,61	4,52	16,74	8	6000	<b>I84080</b>
80x40L	8	70,07	16,93	17,52	8,47	3,05	11,31	8	6000	<b>I84080L</b>
80x40L 2N	8	71,49	18,16	17,87	8,83	3,15	11,66	8	6000	<b>I84080L4N</b>

Materiał: aluminium anodowane

Material: anodized aluminium

## Profile aluminiowe z rowkiem 8 mm | Aluminium profile with nut 8 mm

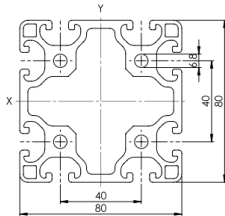
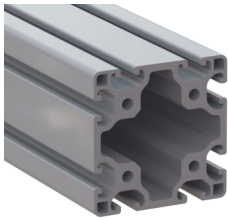
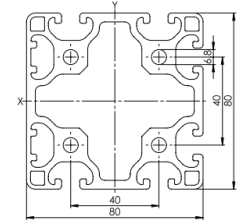
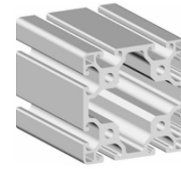
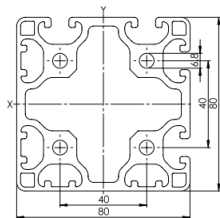
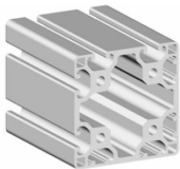
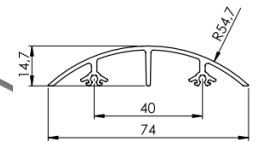
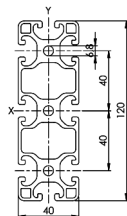
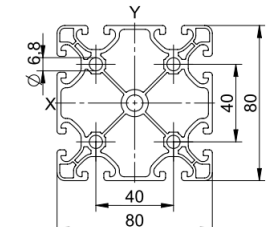
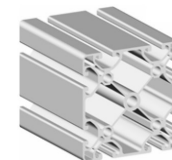

**I84080L0N**

**I84080E**

**I84080E3NE**

**I84080E2NP**

**I88080**

**I88080E**


Profil aluminiowy Aluminium profile	Rowek Nut	$I_x$ [cm <sup>4</sup> ]	$I_y$ [cm <sup>4</sup> ]	$W_x$ [cm <sup>3</sup> ]	$W_y$ [cm <sup>3</sup> ]	Waga Weight [kg/m]	A [cm <sup>2</sup> ]	PE [szt] [pcs]	L [mm]	Kod # Code#
80x40L 6N	8	18,16	73,84	9,08	18,46	2,22	8,22	8	6000	<b>I84080L0N</b>
80x40E	8	60,20	15,93	15,05	7,96	2,48	9,18	8	6000	<b>I84080E</b>
80x40E 3N90	8	15,97	56,50	7,82	13,82	2,28	8,46	8	6000	<b>I84080E3NE</b>
80x40E 4N180	8	15,69	56,96	7,84	14,24	2,23	8,26	8	6000	<b>I84080E2NP</b>
80x80	8	188,05	188,05	47,01	47,01	7,17	26,57	4	6000	<b>I88080</b>
80x80E	8	103,31	103,31	25,82	25,82	4,08	15,11	4	6000	<b>I88080E</b>

Materiał: aluminium anodowane

Material: anodized aluminium

## Profile aluminiowe z rowkiem 8 mm | Aluminium profile with nut 8 mm


**I88080L**

**I88080L6N**

**I88080L4NE**

**I880AP**

**I840120L**

**I88080E**


Profil aluminiowy Aluminium profile	Rowek Nut	$I_x$ [cm <sup>4</sup> ]	$I_y$ [cm <sup>4</sup> ]	$W_x$ [cm <sup>3</sup> ]	$W_y$ [cm <sup>3</sup> ]	Waga Weight [kg/m]	A [cm <sup>2</sup> ]	PE [szt] [pcs]	L [mm]	Kod # Code#
80x80L	8	134,90	134,90	33,72	33,72	5,33	19,75	4	6000	<b>I88080L</b>
80x80L 2N	8	136,31	140,12	34,07	34,44	5,42	20,1	4	6000	<b>I88080L6N</b>
80x80L 4N90	8	141,55	141,55	34,80	34,80	5,52	20,45	4	3000	<b>I88080L4NE</b>
Maskujący R80 AL	8	-	-	-	-	0,55	20,26	10	4150	<b>I880AP</b>
120x40L	8	221,43	24,69	36,91	12,34	4,36	16,14	5	6000	<b>I840120L</b>
120X40	8	322,57	40,28	53,76	20,14	6,57	24,33	5	6000	<b>I840120</b>

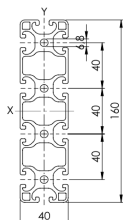
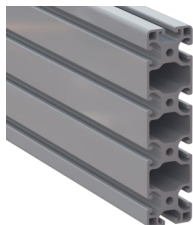
Materiał: aluminium anodowane

Material: anodized aluminium

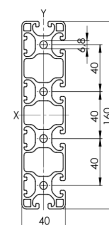
Profile aluminiowe z rowkiem 8 mm | Aluminium profile with nut 8 mm



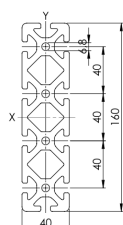
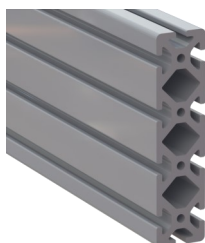
**I840160L**



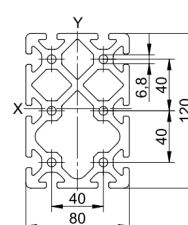
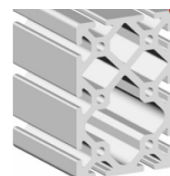
**I840160L6N**



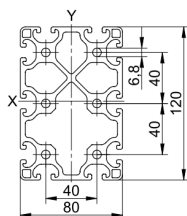
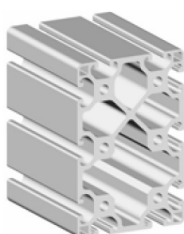
**I840160**



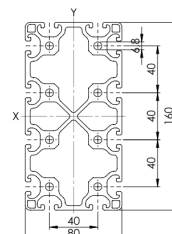
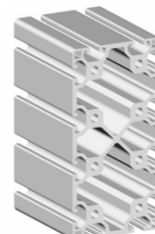
**I880120**



**I880120L**



**I880160L**

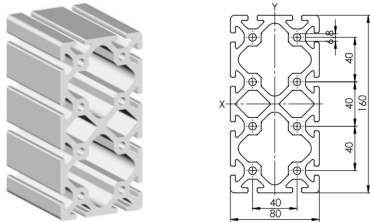
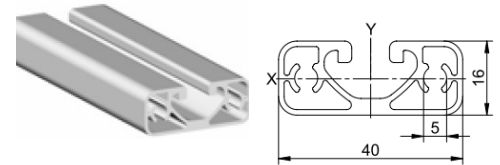
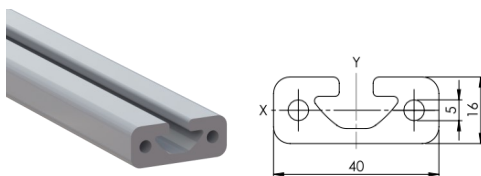
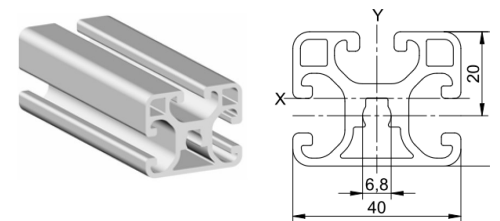
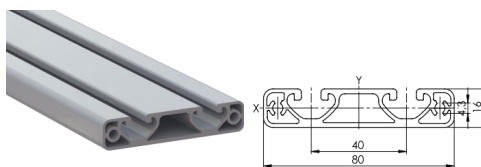
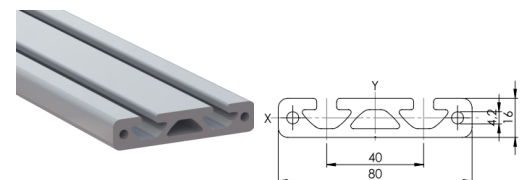


Profil aluminiowy Aluminium profile	Rowek Nut	$I_x$ [cm <sup>4</sup> ]	$I_y$ [cm <sup>4</sup> ]	$W_x$ [cm <sup>3</sup> ]	$W_y$ [cm <sup>3</sup> ]	Waga Weight [kg/m]	A [cm <sup>2</sup> ]	PE [szt] [pcs]	L [mm]	Kod # Code#
160x40L	8	501,91	32,44	62,74	16,22	5,66	20,97	4	6000	<b>I840160L</b>
160x40L 4N	8	34,89	515,93	16,93	64,49	5,85	21,67	4	6000	<b>I840160L6N</b>
160x40	8	738,38	53,34	92,30	16,67	8,62	31,93	4	6000	<b>I840160</b>
120x80	8	574,22	274,63	92,99	68,66	10,76	39,86	2	6000	<b>I880120</b>
120x80L	8	422,46	202,75	68,44	50,69	8,12	30,08	2	6000	<b>I880120L</b>
160x80L	8	265,74	902,06	66,44	112,76	10,06	37,24	2	6000	<b>I880160L</b>

Materiał: aluminium anodowane

Material: anodized aluminium

**Profile aluminiowe z rowkiem 8 mm | Aluminium profile with nut 8 mm**

**I880160**

**I81640E**

**I81640**

**I84032L**

**I81680E**

**I81680**


Profil aluminiowy <i>Aluminium profile</i>	Rowek <i>Nut</i>	$I_x$ [cm <sup>4</sup> ]	$I_y$ [cm <sup>4</sup> ]	$W_x$ [cm <sup>3</sup> ]	$W_y$ [cm <sup>3</sup> ]	Waga <i>Weight</i> [kg/m]	A [cm <sup>2</sup> ]	PE [szt] [pcs]	L [mm]	Kod # <i>Code#</i>
160x80	8	362,26	1226,29	90,56	153,28	13,46	49,85	2	6000	<b>I880160</b>
40x16E	8	0,69	3,71	0,84	1,86	0,66	2,45	10	3000	<b>I81640E</b>
40x16	8	1,09	6,95	1,27	3,47	1,16	4,28	10	3000	<b>I81640</b>
40x32	8	5,00	7,03	3,10	3,52	1,32	4,90	10	6000	<b>I84032L</b>
80x16E	8	1,57	31,32	1,89	7,83	1,34	4,98	10	3000	<b>I81680E</b>
80x16	8	2,20	49,34	2,62	12,34	2,16	8,01	10	3000	<b>I81680</b>

Materiał: aluminium anodowane

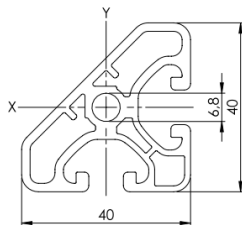
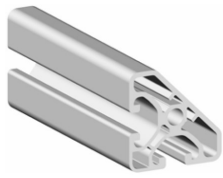
Material: anodized aluminium



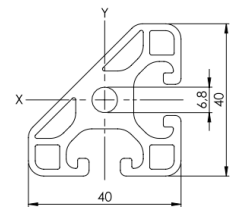
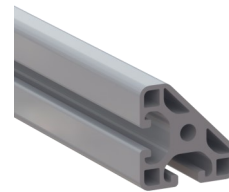
Profile aluminiowe z rowkiem 8 mm | Aluminium profile with nut 8 mm



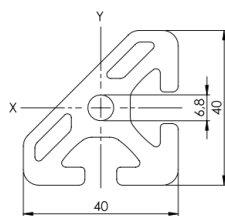
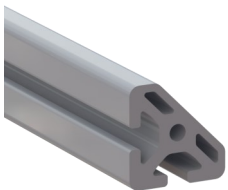
**I84040E45°**



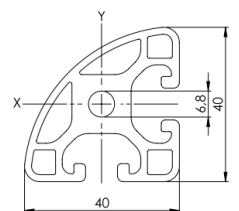
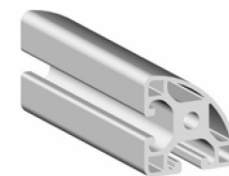
**I84040L45°**



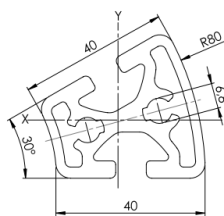
**I8404045°**



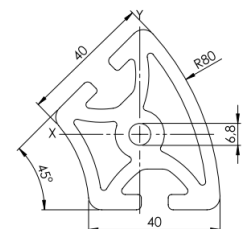
**I840LR90**



**I840RR30**



**I840RR45**



Profil aluminiowy Aluminium profile	Rowek Nut	I <sub>x</sub> [cm <sup>4</sup> ]	I <sub>y</sub> [cm <sup>4</sup> ]	W <sub>x</sub> [cm <sup>3</sup> ]	W <sub>y</sub> [cm <sup>3</sup> ]	Waga Weight [kg/m]	A [cm <sup>2</sup> ]	PE [szt] [pcs]	L [mm]	Kod # Code#
40x40E-45°	8	5,95	5,95	2,60	2,60	1,23	4,54	8	6000	<b>I84040E45°</b>
40x40L-45°	8	6,63	6,63	2,95	2,95	1,50	5,57	8	6000	<b>I84040L45°</b>
40x40-45°	8	9,51	9,51	4,12	4,12	1,98	7,33	8	6000	<b>I8404045°</b>
R40L-90°	8	6,63	6,63	3,02	3,02	1,52	5,64	8	6000	<b>I840LR90</b>
R40/80-30°	8	6,56	8,99	2,91	3,83	1,68	6,22	6	6000	<b>I840RR30</b>
R40/80-45°	8	22,42	16,68	7,08	6,28	2,77	10,27	6	6000	<b>I840RR45</b>

Materiał: aluminium anodowane

Material: anodized aluminium



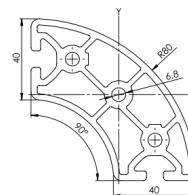
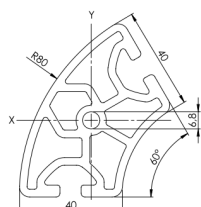
Profile aluminiowe z rowkiem 8 mm | Aluminium profile with nut 8 mm



I84040R60



I840RR90



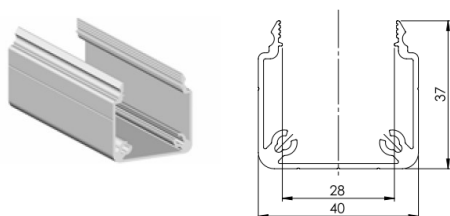
Profil aluminiowy Aluminium profile	Rowek Nut	$I_x$ [cm <sup>4</sup> ]	$I_y$ [cm <sup>4</sup> ]	$W_x$ [cm <sup>3</sup> ]	$W_y$ [cm <sup>3</sup> ]	Waga Weight [kg/m]	A [cm <sup>2</sup> ]	PE [szt] [pcs]	L [mm]	Kod # Code#
R40/80-60°	8	35,44	22,89	9,33	7,59	2,86	10,6	6	6000	I840RR60
R40/80-90°	8	75,99	75,94	18,78	18,78	3,94	14,60	4	6000	I840RR90

Materiał: aluminium anodowane

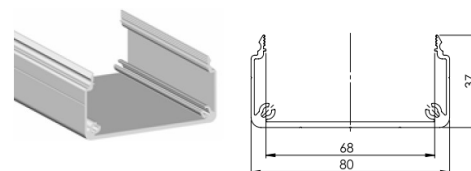
Material: anodized aluminium

Profile specjalne | Special profiles

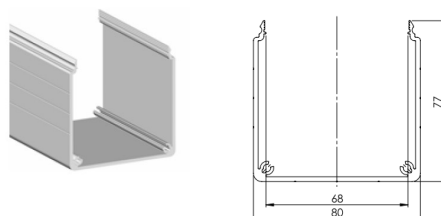
**IKK4040**



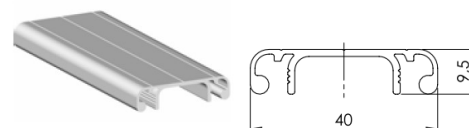
**IKK4080**



**IKK8080**



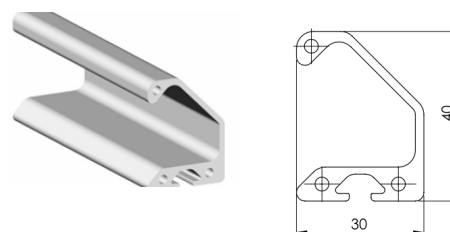
**IKK40D**



**IKK80D**



**I5GL**



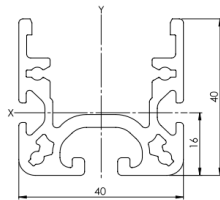
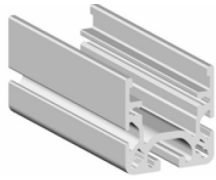
Profil aluminiowy <i>Aluminium profile</i>	Rowek <i>Nut</i>	$I_x$ [cm <sup>4</sup> ]	$I_y$ [cm <sup>4</sup> ]	$W_x$ [cm <sup>3</sup> ]	$W_y$ [cm <sup>3</sup> ]	Waga <i>Weight</i> [kg/m]	A [cm <sup>2</sup> ]	PE [szt] <i>[pcs]</i>	L [mm]	Kod # <i>Code#</i>
Profil kanałowy U 40x40 SE	-	-	-	-	-	0,58	21,6	12	3000	<b>IKK4040</b>
Profil kanałowy U 80x40 D80 SE	-	-	-	-	-	0,91	33,82	8	3000	<b>IKK4080</b>
Profil kanałowy U 80x80 SE	-	-	-	-	-	1,53	56,7	8	3000	<b>IKK8080</b>
Profil pokrywy D40E	-	-	-	-	-	0,31	11,35	12	3000	<b>IKK40D</b>
Profil pokrywy D80E	-	-	-	-	-	0,55	20,4	8	3000	<b>IKK80D</b>
Listwa uchwytna	5	-	-	-	-	0,77	28,4	10	3000	<b>I5GL</b>

Materiał: aluminium anodowane  
*Material: anodized aluminium*

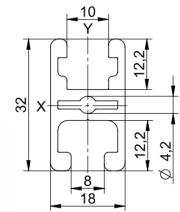
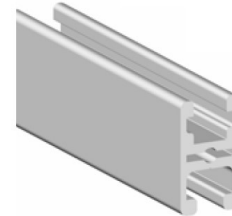
Profile specjalne | Special profiles



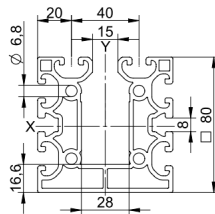
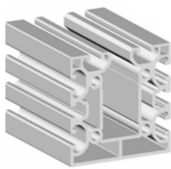
I8RP01



I83218



I88080X2NPK



Profil aluminiowy Aluminium profile	Rowek Nut	$I_x$ [cm <sup>4</sup> ]	$I_y$ [cm <sup>4</sup> ]	$W_x$ [cm <sup>3</sup> ]	$W_y$ [cm <sup>3</sup> ]	Waga Weight [kg/m]	A [cm <sup>2</sup> ]	PE [szt] [pcs]	L [mm]	Kod # Code#
Listwa rolkowa 8 40x40	8	10,28	5,75	5,14	2,28	1,34	49,7	20	6000	I8RP01
Zaciskowy 32x18	8	1,87	1,10	1,15	1,22	0,67	2,49	10	6000	I83218
X 80x80 2N K15	8	115,58	129,64	28,21	32,41	4,94	18,28	4	6000	I88080X2NPK

Materiał: aluminium anodowane  
Material: anodized aluminium